

# Scrutiny Overview

## Arts, Leisure and Culture

### Select Committee

#### May 2013



Stockton-on-Tees  
BOROUGH COUNCIL

Arts, Culture and Leisure

Big plans for great experiences

# Arts, Leisure and Culture Select Committee

## Culture and Leisure Services

**Reuben Kench**

## Parks, Countryside and Greenspace

**Graham Clingan**



# Performance – what has been achieved

- **SIRF 2012 Visitor satisfaction** - 88%
- **Community Carnival** – 1,600 exceeded target by 40%
- **Library Visits** - 1,202,000 exceeded target by 14%
- **Preston Hall Museum Visits** - 128,000 exceeded target by 28%
- **Tees Active Ltd run pools and sports centres** - 1.7m visits and 1.2m active participants.

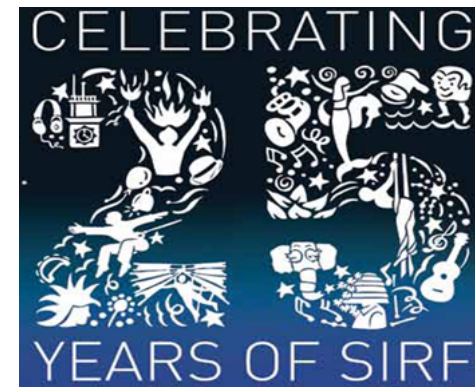
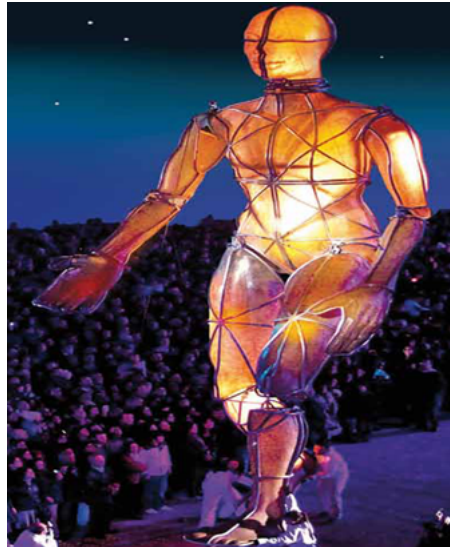
## Adult Participation

- 20% are **members of a club** so that they can participate in sport or recreational activity (+/- 4.8%).
- 45% do at least **150 minutes of physical activity** a week



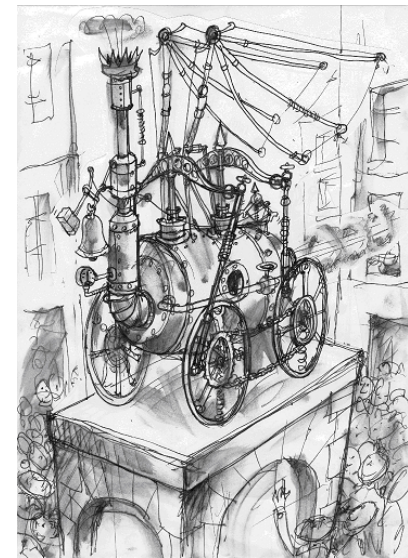
# Key Achievements – Arts Development (1)

- Enhanced SIRF for the 25th anniversary.
- Spectacular opening show Prometheus Awakes.
- Community Carnival scale and diversity.
- SIRF 2012 – generated £1.3m additional expenditure.



# Key Achievements – Arts Development (2)

- Tees Barrage selected as launch site for Festival Of The North East.
- Public art and design features for Stockton Town Centre reflecting SIRF as a ‘signature’ of the town.

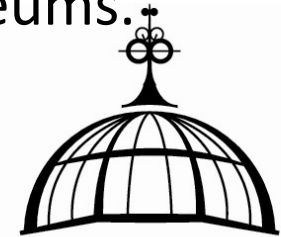
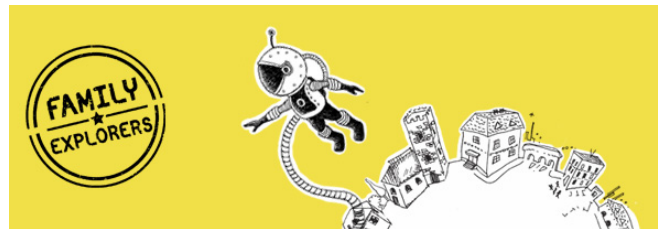




# Key Achievements

## Preston Park Museum and Grounds

- Preston Park Museum and Grounds - £7m investment official re-launch March 2013.
- One of ten finalists for the prestigious Arts Fund Prize of £100k for Museum of the Year 2013.
- In running for £10k Clore Award for Learning recognises achievements in learning programmes in UK museums.
- Taking part in regional Cultural Window - 500 North East families testing what is a good family day out.



PRESTON PARK  
MUSEUM & GROUNDS



Stockton-on-Tees  
BOROUGH COUNCIL

Arts, Culture and Leisure

# What has proved more difficult

- Challenge to organize 25<sup>th</sup> Anniversary SIRF 12 on such large scale with small team.
- Attracting regional and national media to our events.
- Business engagement in events 'exploiting opportunities we create'.
- School Library project.



# Emerging Issues (1)

- Support arts programmes and events which contribute to the distinctive design and animation of public spaces in delivering the Town Centre Prospectus.
- SIRF 2013 - managing budget with volatile nature of £ and €.
- Support the further development of the environs of Preston Hall Museum through the Landscape Partnerships “River Tees Rediscovered” project.
- Further develop Preston Hall Museum and Grounds as a community and leisure attraction through learning and engagement opportunities, demonstrations, events and interpretation.

## Emerging Issues (2)

- World War 1 Commemoration from August 2014.
- Invest in new technologies to deliver a wider range of library and information services more effectively and implement new library service delivery model.
- Deliver high quality sporting events which promote mass participation and lifestyle change whilst being a catalyst for attracting visitors to the borough and increasing economic vibrancy.

# Direct Services

## Service Area Responsibilities

### Care For Your Area:

- Management and maintenance of urban parks, country parks, nature reserves and other greenspaces
- Grounds maintenance / horticultural services / tree and woodland management



# Direct Services

## Service Area Responsibilities

### **Countryside & Greenspace:**

- Coordinating delivery of Green Infrastructure Strategy
- Project development and delivery
- Delivering new and improved green infrastructure through the planning and development process



# Performance – what has been achieved

- 88% residents use parks and greenspaces - the most widely used of any facilities provided by the Council
- 75% are satisfied with parks and greenspaces (compared to 63% in 2008)
- Northumbria in Bloom 2012 - Billingham, Stockton and Thornaby Gold Medal winners
- Britain in Bloom 2012 - Champion of Champions Gold
- Local Wildlife/Geological Sites – 26 of 57 sites (46%) in public, private and third sector ownership known to be in positive management



# Key Achievements: Strategic Planning

- Green Infrastructure Strategy fully integrated into emerging Regeneration & Environment LDD.
- Comprehensive Green Infrastructure Delivery Plan prepared.
- Green Infrastructure Delivery Plan successfully being used as a basis to secure S106 contributions.



# Key Achievements: Partnership Working

- New Tees Valley Nature Partnership established.
- Other multi-agency partnerships established or sustained, e.g. River Users Group, Stockton River Corridors, North Tees Natural Network.
- Strong local partnership working - both on project delivery and on-going management, e.g. Town/ Parish Councils, Residents Associations, Parks Friends Groups, Friends of Tees Heritage Park



# Key Achievements: Projects / Operational (1)

- Total project expenditure from 2007 to 2013: £3,409,000, with 73% (2,488,000) secured through external grants / contributions
- Further £1,043,000 for 2013/14 or beyond (60% external)
- 42 active Countryside Volunteers, contributing 1,902 work days during 2012/13.



# Key Achievements: Projects / Operational (2)

- Tees Heritage Park – phase 1 works completed
- Thornaby Circular Trail – access works completed
- Big Tree Plant (communities planted >400 trees over six sites)
- River Tees Rediscovered - HLF Landscape Partnership Project. Stage 1 Pass.
- Numerous small-scale schemes delivered, e.g. Bishopsgarth MUGA, Harold Wilson Play Area, Newham Grange Cycle Path, Pickards Meadow (10 acres lowland meadow), Old River Tees salt marsh restored.



# What has proved more difficult

- Developing and delivering projects through smaller teams, with reduced revenue funding to support on-going management and maintenance.
- Most projects involve local consultation and are delivered in partnership with local groups and several partner organisations. The project management process can be complex and challenging – even for relatively small-scale projects.



# Emerging Issues (1)

- Need to further raise awareness and understanding of green infrastructure: the functions it can perform and the benefits it can deliver, e.g. flood risk management and improving health and well-being.
- Need for more and better facilities/activities for teenagers (the most important area for improvement according to the Residents Survey 2012): 2 new skate parks planned and Multi-Use Games Areas too.

## Emerging Issues (2)

- Severe pressures on revenue funding for management / maintenance of green infrastructure projects.
- But some capital investment will reduce revenue costs in short term.
- Increased role for community organisations and partners to deliver activities and manage / develop sites and facilities?
- Greater engagement with private sector partners?
- Opportunities for more collaborative working between community / friends groups across the Borough?